

EasySense Philips Field Apps User Manual

August 2018

Content

Introduction to this manual

- Download app
- Phone requirements
- User Registration
- Sign in
- Philips Field Apps

EasySense NFC – for EasySense SNS200 and EasySense SNH200

- Features overview
- Scan device to configure parameters
- Profiles
- Energy reporting – Beta test version

EasySense Office IR – for EasySense SNS200

- Features overview
- Grouping
 - Create group
 - Add to group - Add fixture
 - Add to group - Add wireless
- switch
 - Remove from group – Remove
- fixture
- Configure
 - Configure parameters
 - Configure scenes
- Quick light level settings

Profiles

- Use/edit stored profiles

Maintenance

- Features overview
- Installer test
- Reset network settings
 - Reset parameters
 - Change Zigbee channel

EasySense Industry IR – for EasySense SNH200

- Features overview
- Grouping and zoning
 - Create group with zones
 - Add fixture to zone (existing zone)
 - Add fixture to zone (free zone)
 - Remove fixture from zone
 - Add switch to group
- Quick settings
- Configure
- Profiles
- Maintenance
 - Features overview
 - Installer test
 - Check zones
 - Reset network settings

Reset parameters

- Change zigbee channel

Using IR Dongle

- For EasySense Office IR
- For EasySense Industry IR

App settings

- Preferences
- Disclaimer
- About

Troubleshooting tips/System messages

Introduction to this manual

Download App

The Philips Field Apps can be downloaded for free from Google Play store.



Phone requirements

The Philips Field Apps works only on certain Android based smart phones. Check our website for the latest list of compatible phones with NFC and IR blaster functionality along with their NFC reader locations:

<https://www.na.mytechnologyportal.lighting.philips.com/dam/file:3fa62d47-5816-43a4-b62f-3770d4067027/Philips+EasySense+Recommended+Phone+List+.pdf>

User Registration

All users can register at the following link:
<https://www.componentcloud.philips.com/#/register;first=true>

For existing users, it is possible to reset the password at the following link:
<https://www.componentcloud.philips.com/#/forgot>

You need to create an account first
to request access for your company

Already have an account? Sign in to get started.

ABOUT YOU

First Name

Last Name

Company Optional

Country

City Optional

Postal Optional

Address Optional

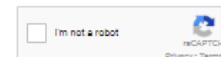
SIGN IN INFORMATION

Email

Password

Confirm Password

I acknowledge that I have read, understood and agree to
the Terms of Use and Privacy Notice

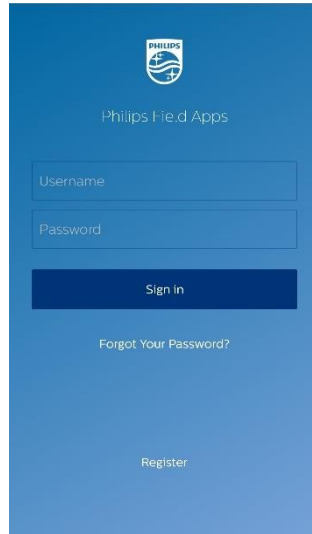


Request Access



PHILIPS

Sign in



A first time user needs to accept *Conditions of use* and then sign in with username and password. Make sure to have an internet connection for signing in.

The Philips Field Apps consists of following sub-apps:
EasySense NFC
EasySense Office IR
EasySense Industry IR

Philips Field Apps

Two complementary sub-apps are available within Philips Field Apps for configuring EasySense sensors: EasySense NFC and EasySense IR/ Industry IR (Office or Industry).

The **EasySense NFC App** can be used to:

- Configure light parameters, one fixture at a time
- Store the desired settings as profiles for future use
- Data reporting

This app can be used prior to installation: the fixtures do not need to be powered. The communication to the sensor is with NFC, which means the smartphone needs to be in close proximity, almost touching the sensor.

The **EasySense IR/ Industry IR Apps** can be used to:

- Commission fixtures into a group
- Configure light parameters of a single fixture or an entire group
- Add wireless switches to a group
- Reset sensors or settings to factory defaults

This app can be used once the fixtures are installed and powered. The communication to the sensor is with IR signal from ground level.

Note:

For working with EasySense SNS200, it is recommended to use an IR Dongle (available via Philips).

For working with EasySense SNH200, it is mandatory to use an IR Dongle (available via Philips).



EasySense NFC

For EasySense SNS200 and EasySense SNH200

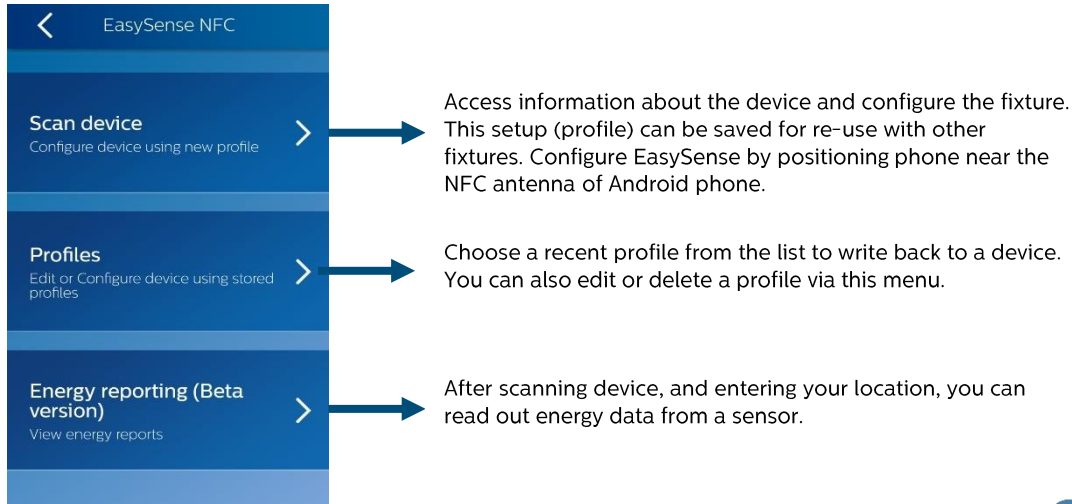


Features overview

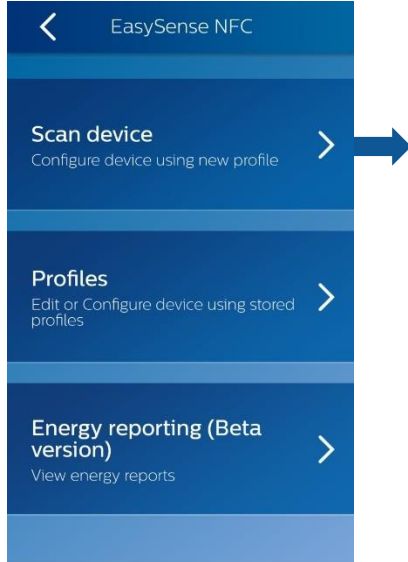
This sub-app could be used prior to sensor installation on ceiling for configuring its settings. Based on Near Field Communication (NFC) technology, it is crucial for the sensor to be placed near the NFC chip of the Android phone (identify the location of NFC chip: please refer to “Phone requirements” section).

For using this app, the sensor need not be powered up. It is also possible to scan a device and change its parameters, save and re-use profiles to configure other sensors and read out energy report (a beta feature).

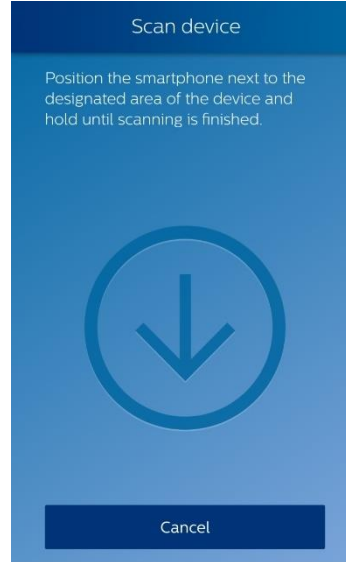
Note: Via this sub-app, it is not possible to commission fixtures within a group. Please use the **EasySense IR/Industry IR sub-apps** for this purpose.



Scan device to configure parameters



1. Open the *Scan device* sub-menu



2. To scan a sensor, when this screen is visible, place the phone with its NFC reader on the (NFC location of the) sensor

Scan device to configure parameters



EasySense SNS200

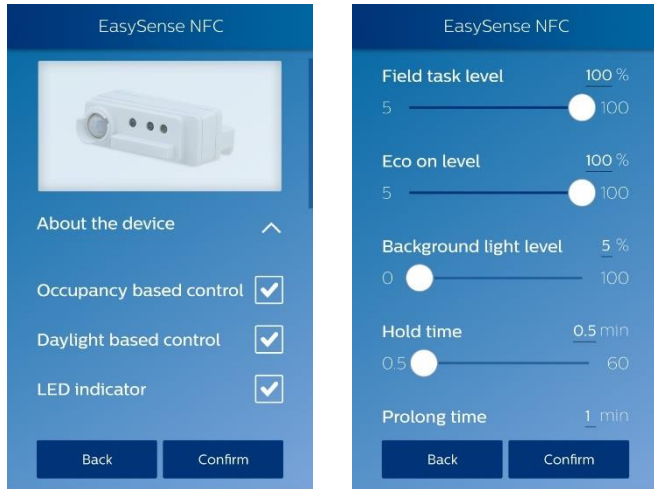


EasySense SNH200

Note: Make sure that the NFC reader location is known on the smartphone used. Place the back of the smartphone (where the NFC reader locates) onto the sensor NFC antenna (almost touching) to enable NFC communication.

NFC communication might take a few seconds, hold the smartphone until the screen “Configuration Successful” appears.

Scan device to configure parameters



3. Once scanned successfully, the user will see all the sensor settings displayed on the phone.

After changing the parameters, press **Confirm** to write back the changes to the sensor via NFC.

The sensor parameters that can be configured are listed below.

For detailed explanation of each of the parameters, please refer the **SNS200** or **SNH200** design-in guides, available on the technical downloads website:

<http://www.philips.com/easysense>

Parameters	Default values	
	EasySense SNS200	EasySense SNH200
Occupancy based control	Enabled	Enabled
Daylight based control	Enabled	Disabled
LED indicator	Enabled	Enabled
Group occupancy sharing	Enabled	Enabled
Group light behavior	Background light level	Background light level
Occupancy mode	Auto on/off	Auto on/off
Field task level	100%	100%
Eco on level	100%	100%
Background light level	20%	20%
Hold time	15min	15min
Prolong time	15min	15min
Grace fading time	10s	10s

Scan device to configure parameters

Save profile

To save the profile, enter the name and location. Or press 'Configure EasySense' if saving is not required.

Profile name

Location

Configure EasySense

Back

Save profile

To save the profile, enter the name and location. Or press 'Configure EasySense' if saving is not required.

NAME

LOCATION

Configure EasySense

Back



Configuring EasySense

Position the smartphone next to the designated area of the EasySense and hold until configuration is successful.

Cancel

Configuration success...

The EasySense was successfully configured.

Configure EasySense again

Done

4. Before configuring the EasySense sensor, the user can decide to save the settings in a profile.

Profiles allow storage of all settings under a chosen name and location. They can be reused to configure other sensors.

- To save a profile, the user needs to write a name and a location.
- By leaving the text boxes blank, the profile won't be saved.

When ready, press **Configure EasySense**.

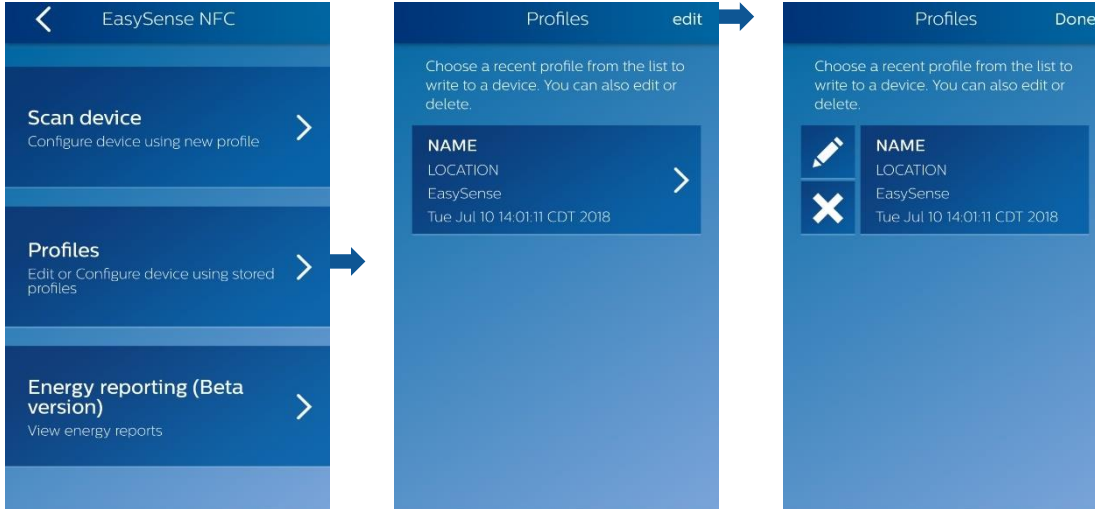
5. Scan the sensor until the next screen appears

6. The sensor is now configured

Profiles

It is possible to use a stored profile to configure sensors. In this menu, the user can see which device the profile has been written on, and the last time it has been used.

This menu also allows to edit or remove a profile.



With the NFC App, the user can write back a profile to a single EasySense sensor.

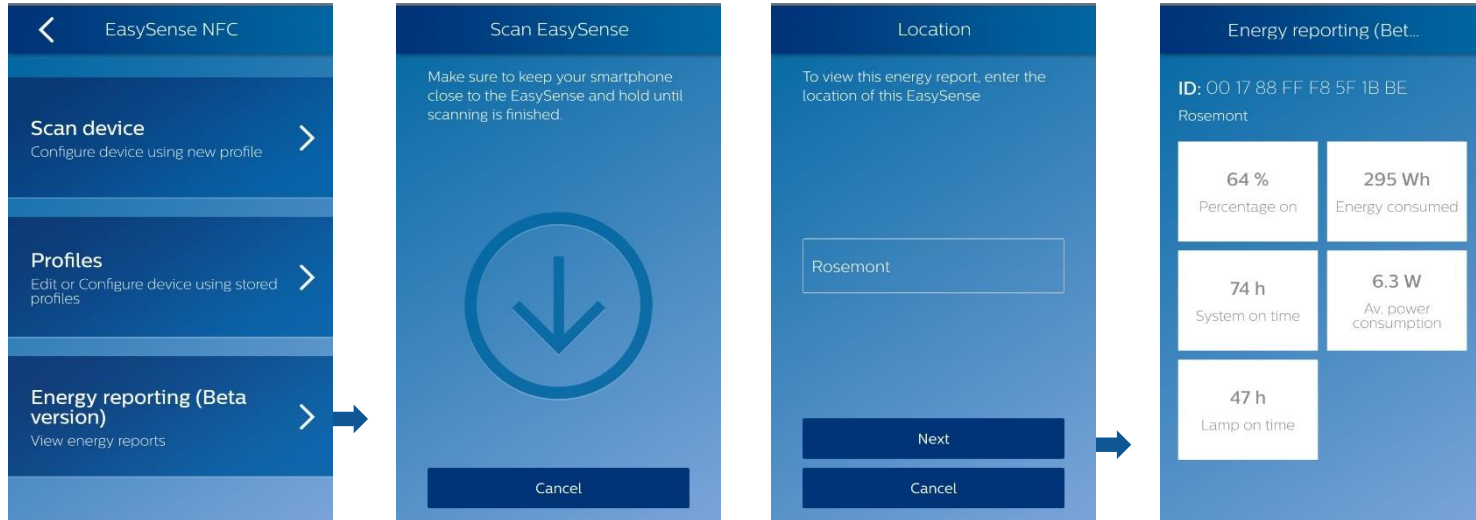
Note: For writing parameters to an entire group of fixtures, please use the Office IR or Industry IR apps.

Energy reporting

Beta test version

A beta version of energy reporting is available within Philips Field Apps i.e. not yet released for production use. Please feel free to use this feature and provide us your feedback.

After scanning an EasySense sensor and entering your location (optional), one can read out energy data.



Energy reporting

Beta test version

The energy report consists of five values as explained below:

- **Percentage on:** $(\text{Lamp on time} / \text{System on time}) * 100$
- **Energy consumed:** Accumulated consumption reported by the driver connected to the sensor through the entire lifetime of the driver.
Note: Accuracy depends on the capability of the connected Xitanium SR Driver.
- **System on time:** Time the driver was powered on through the entire lifetime of the driver.
- **Av. power consumption:** Total consumed energy / System on time
- **Lamp on time:** Time the LED strip connected to the driver was on (any dim level other than off) through the entire lifetime of the driver

Note: This feature only works after the system has been powered for at least one hour. The interval at which this energy reporting is refreshed with new information is 1h.

EasySense Office IR

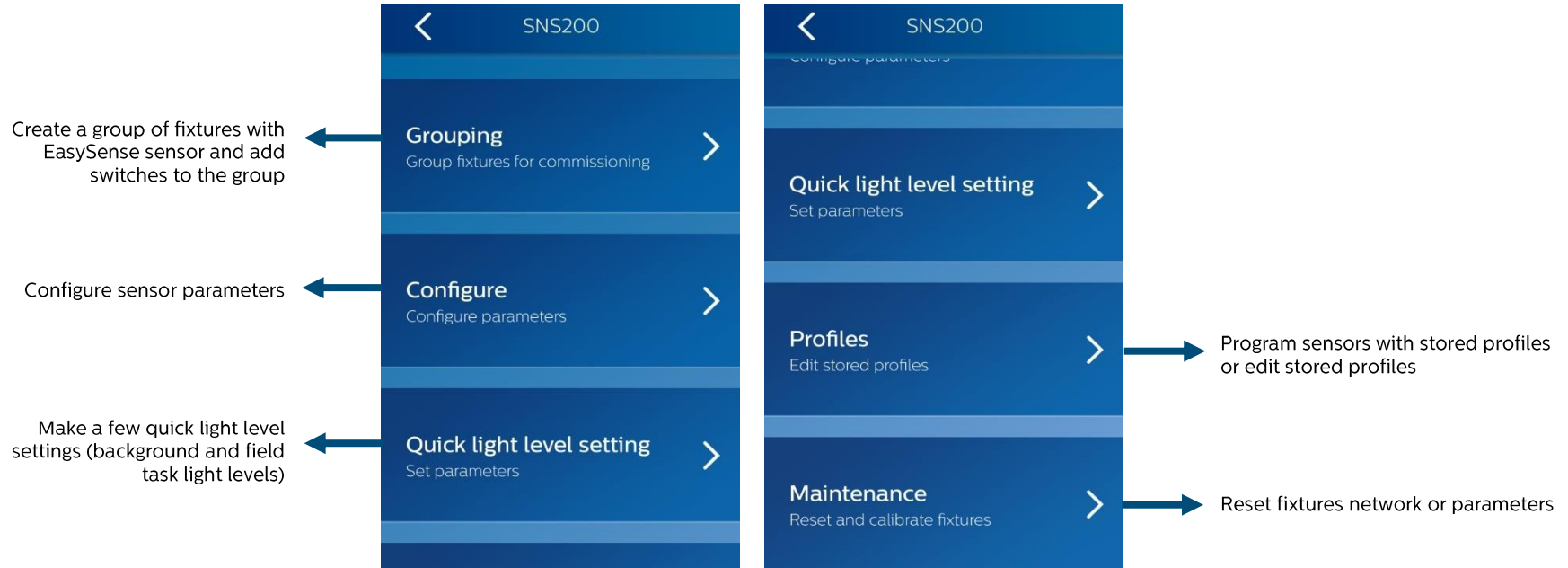
For EasySense SNS200



PHILIPS

Features overview

For using the EasySense Office IR sub-app for EasySense SNS200, it is recommended to use an IR Dongle (available via Philips).



Grouping

Create group

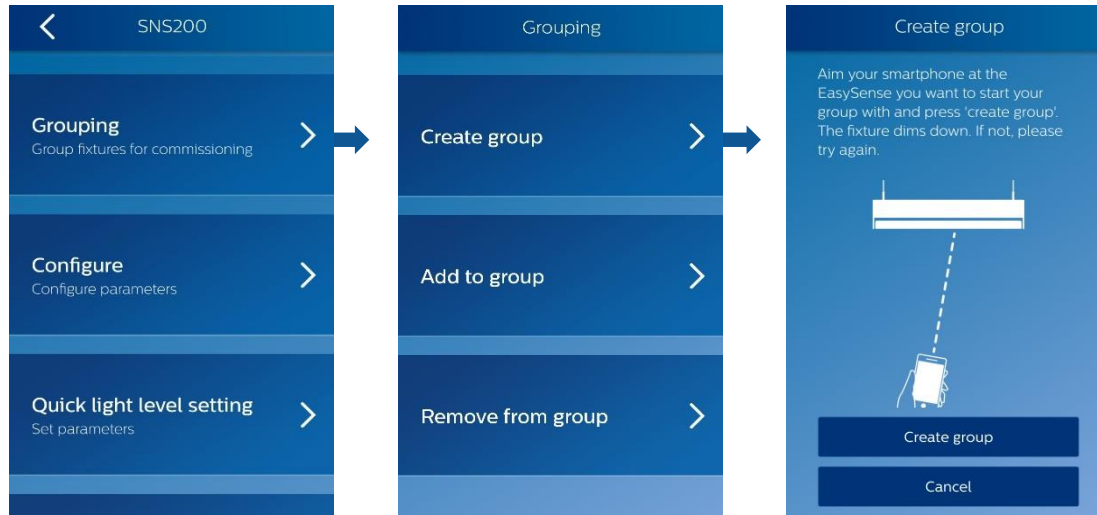
Multiple fixtures can be added in groups. Let us suppose you want to group two fixtures (assuming 1 sensor per fixture), as the following:



Note: For proper group functioning it is recommended to limit the number of fixtures (sensors) in a group of 40.

Grouping

Create group

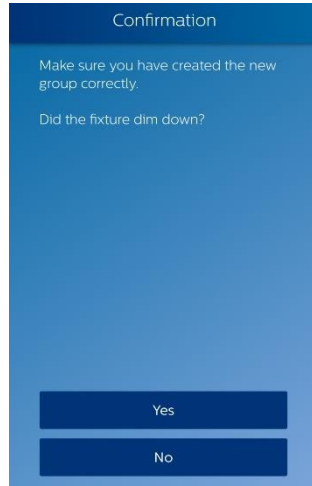


1. Open the sub menu *Create group* under *Grouping* menu

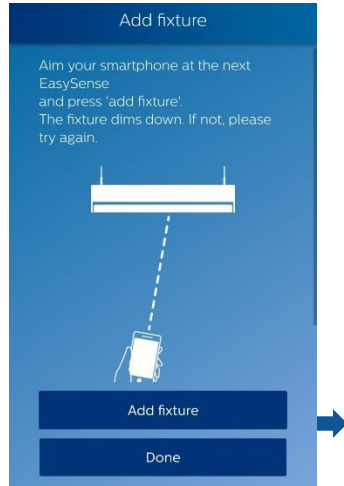
2. Aim the smartphone at the sensor of the first fixture and press **Create group**

Grouping

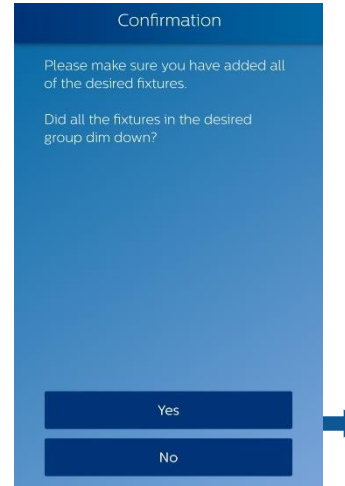
Create group



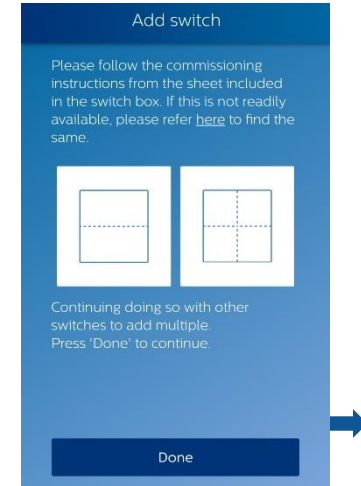
3. Check that the fixture dimmed down, indicating that it is added to Group A.



4. Aim the smartphone at the sensor of fixture 2, and press **Add fixture**.
**Repeat this step with as many fixtures you want to add to this group.*
Once ready, press **Done**.



5. Check that both fixtures of the group dimmed down indicating that they both are now grouped together in Group A.



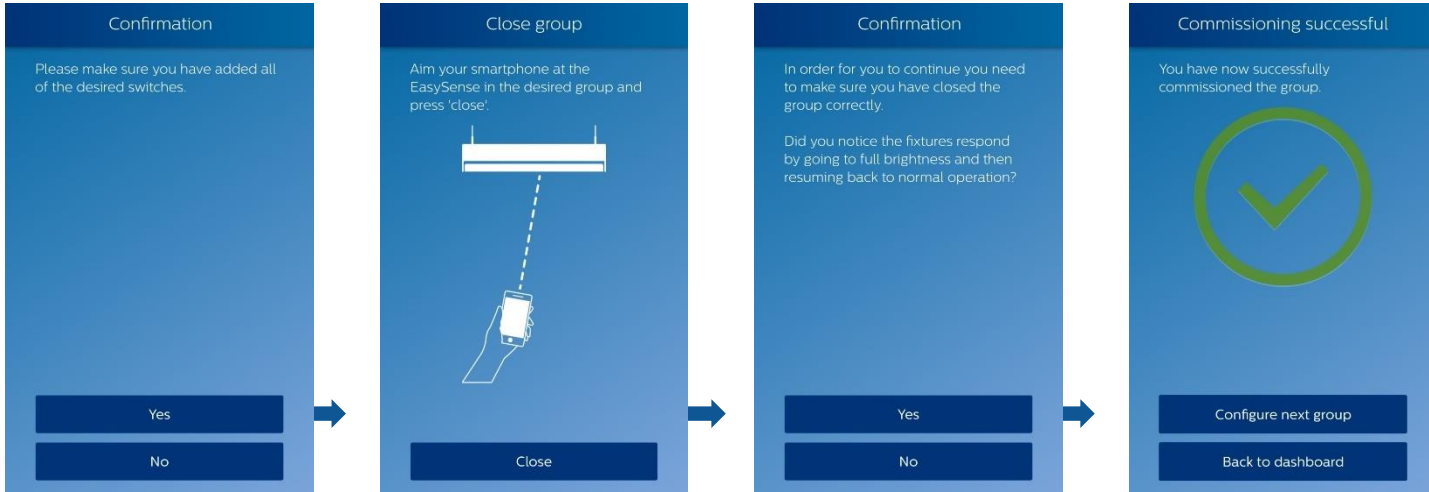
6. To proceed with closing the group, press **Done**.

You may also add a wireless switch to the group. To do so, follow the commissioning instructions. When finished press **Done**.



Grouping

Create group



7. To proceed with closing the group, press **Yes**.

8. Aim the smartphone to the sensor of any fixture of the group and press **Close**

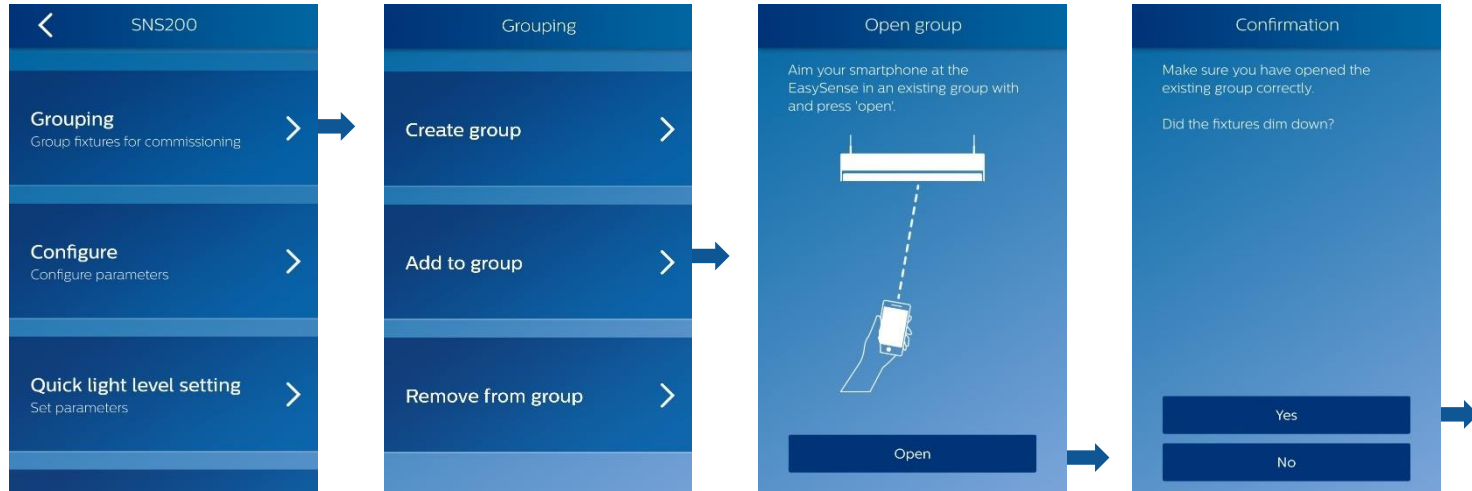
9. Check that all the desired fixtures (1 and 2) go back to full brightness before resuming to normal operation

10. You have now commissioned the group. You may create a new group or go back to dashboard.

Grouping

Add to group – Add fixture

One or more (new) fixtures can be added to an existing group using the Add to group menu.



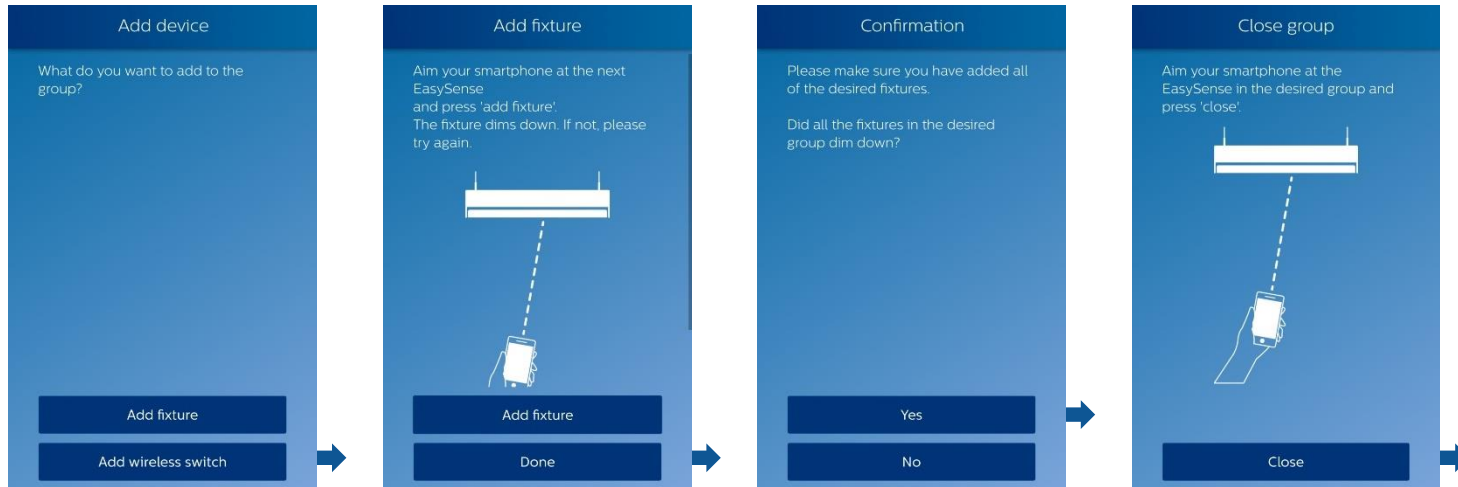
1. Open *Add to Group* sub-menu under *Grouping* menu

2. Aim the smartphone at the sensor of any fixture of the group you want to add the new fixture to, and press **Open**

3. Check that the fixtures of the group dimmed down, indicating that the group is correctly open and press **Yes**.

Grouping

Add to group – Add fixture



4. Press **Add fixture**

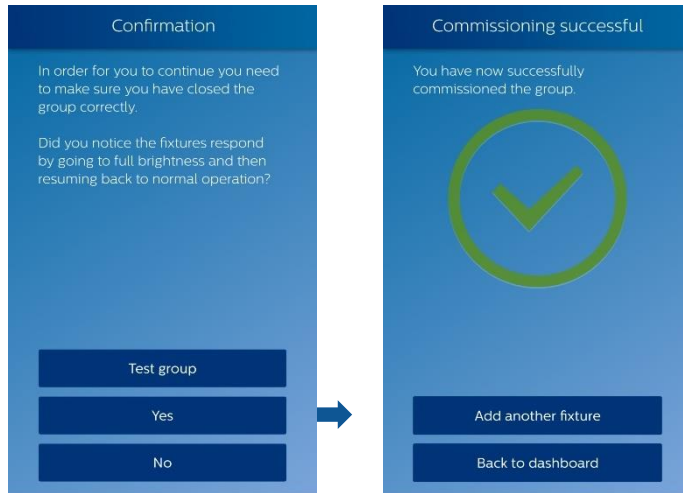
5. Aim the smartphone at the sensor of the fixture to add in the group, and press **Add fixture**. If the fixture dims down, press **Done**.

6. Check that all the fixtures of the group dimmed down. Press **Yes**.

7. Aim the smartphone at the sensor of any fixture of the group and press **Close**

Grouping

Add to group – Add fixture



8. Check that all the fixtures of the group went to full brightness before going back to normal operation, indicating that the group is closed. Press Yes.

9. The new fixture now belongs to the group.

Grouping

Add to group – Add wireless switch

Each brand of switch has a different way of being added to a group. For information on compatible switches refer to the EasySense datasheets at www.philips.com/easysense.

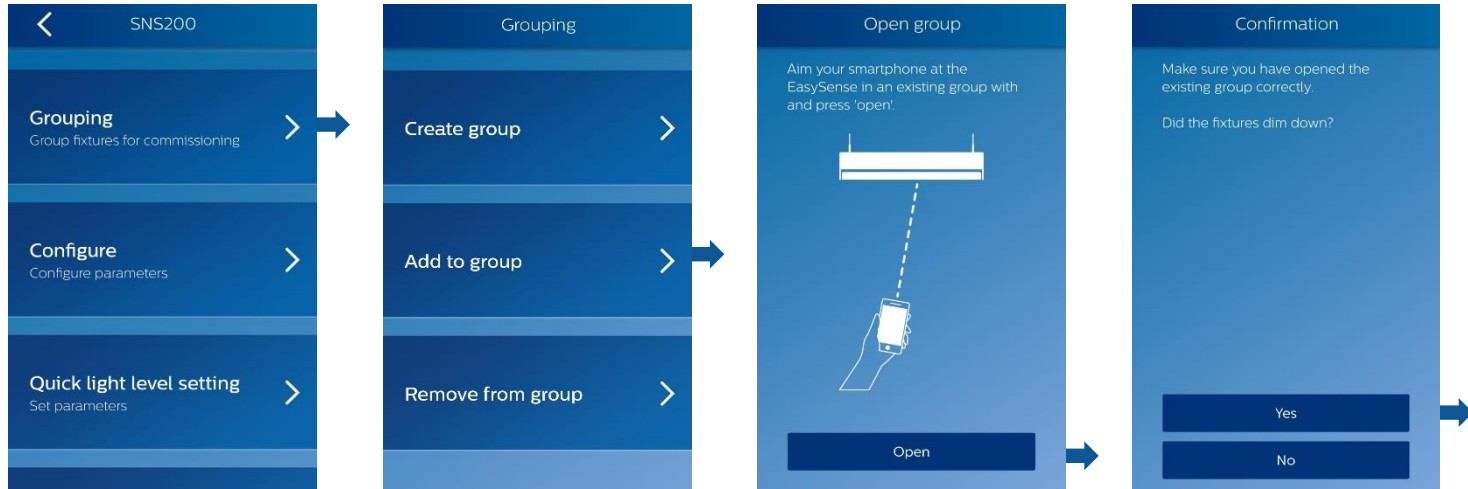
The wireless switches that can be grouped to our fixtures are from the following brands:

- **Illumra**
- **Magnum Energy Solutions**

Note: there is no procedure to remove a switch from a group – the user will need to reset the network via *Maintenance* menu (please refer to “Reset Network Settings” in EasySense Office IR app).

Grouping

Add to group – Add wireless switch



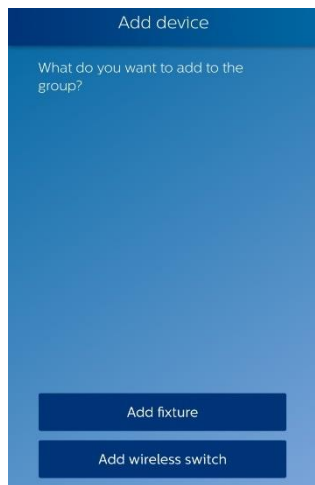
1. Open *Add to Group* sub-menu under *Grouping* menu

2. Aim the smartphone at the sensor of any fixture of the group you want to add the new wireless switch to, and press **Open**

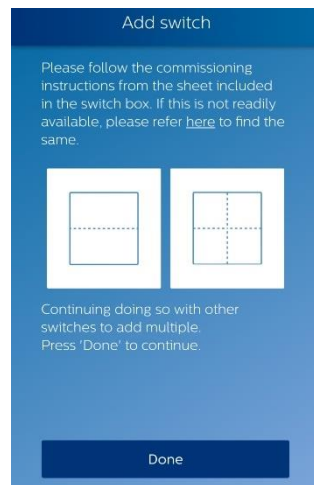
3. Check that the fixtures of the group dimmed down, indicating that the group is correctly open and press **Yes**.

Grouping

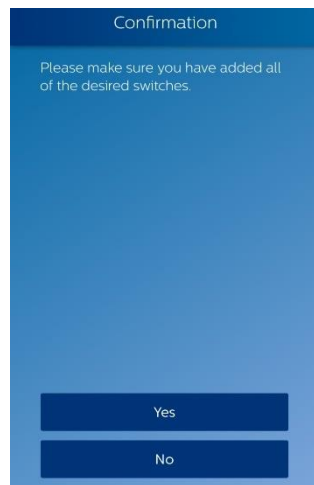
Add to group – Add wireless switch



4. Press **Add wireless Switch**.



5. Follow instructions from switch brand you want to add to the group. When completed press **Done**.



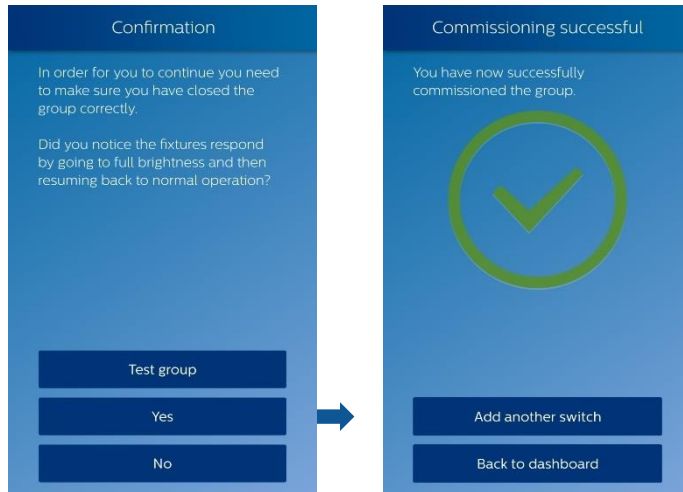
6. Confirm that all switches are added. Press **Yes**.



7. Aim your smartphone to the sensor of any fixture of the group, and press **Close**.

Grouping

Add to group – Add wireless switch



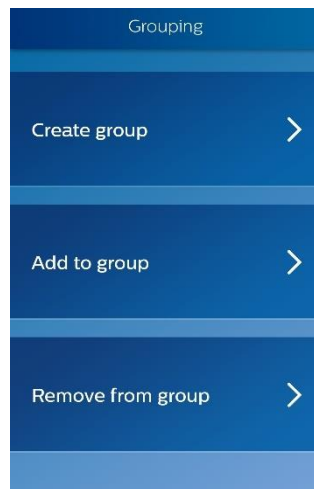
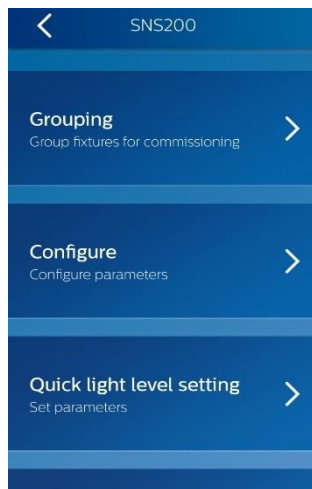
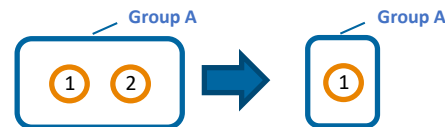
8. Confirm that the group closed correctly. Press **Yes**.

9. The new wireless switch now belongs to the group. You may add another one, or resume to dashboard.

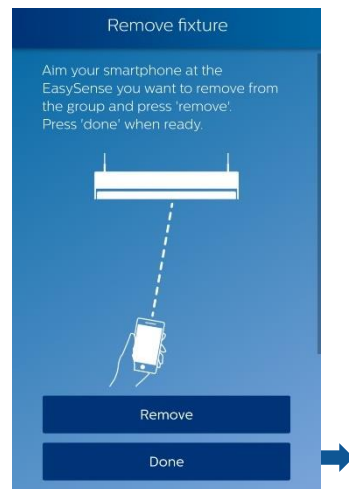
Grouping

Remove from group – Remove fixture

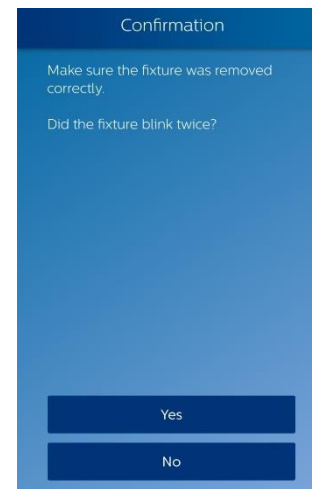
The procedure to remove a fixture from a group is straightforward. Let us suppose we want to remove fixture 2 from group A:



1. Open the *Remove from group* submenu



2. Aim the smartphone at the sensor of the fixture you want to remove (fixture 2) and press **Remove**. Once ready, press **Done**.

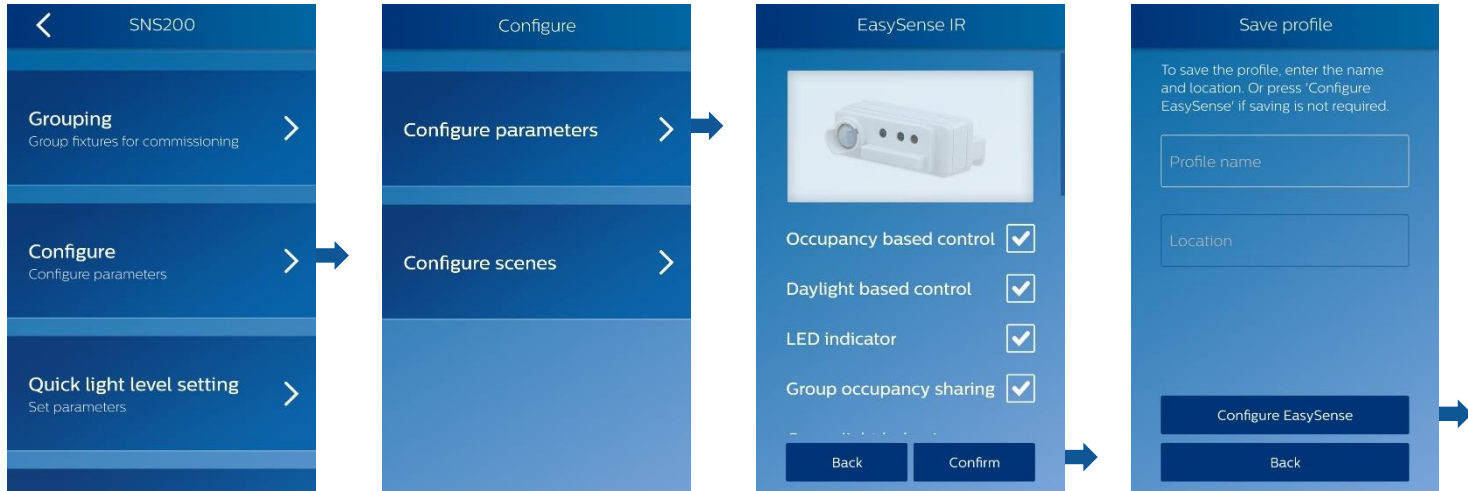


3. Confirm that the fixture blinked twice. Press **Yes** to finish.



Configure

Configure parameters



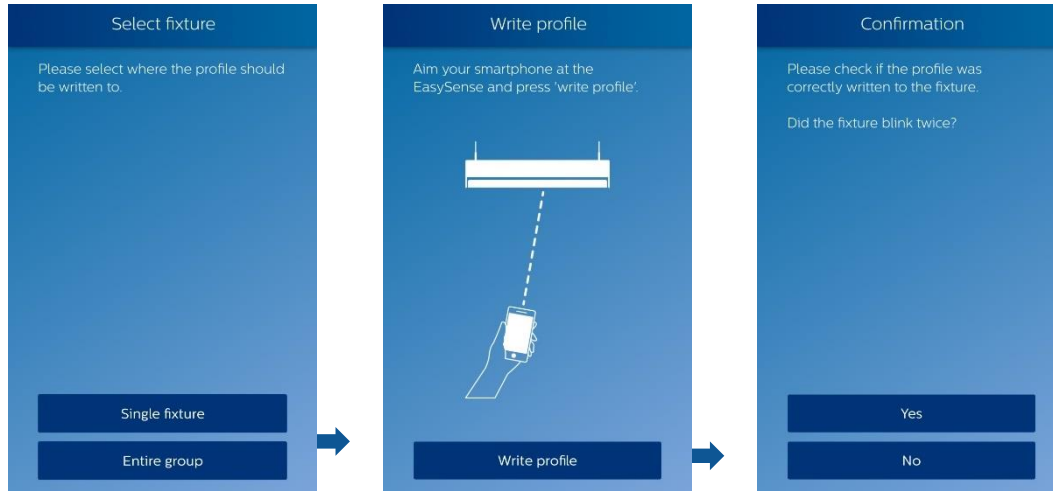
1. Open the *Configure parameters* submenu under *Configure* menu.

2. Configure parameters to desired settings. Once ready, press **Confirm**.

3. Type Profile name and Location if Profile needs to be saved for later use. If not, press **Configure EasySense**.

Configure

Configure parameters



4. The profile can be written to a single fixture or to an entire group.

5. Aim the smartphone at the fixture's sensor, and press **Write profile**

6. Confirm that the fixture blinked twice. Press **Yes** to finish.

Configure

Configure scenes

It is possible to store 2 scenes on a 4-button wireless switch. A scene is a particular light level setting of fixtures that can be saved on the switch.

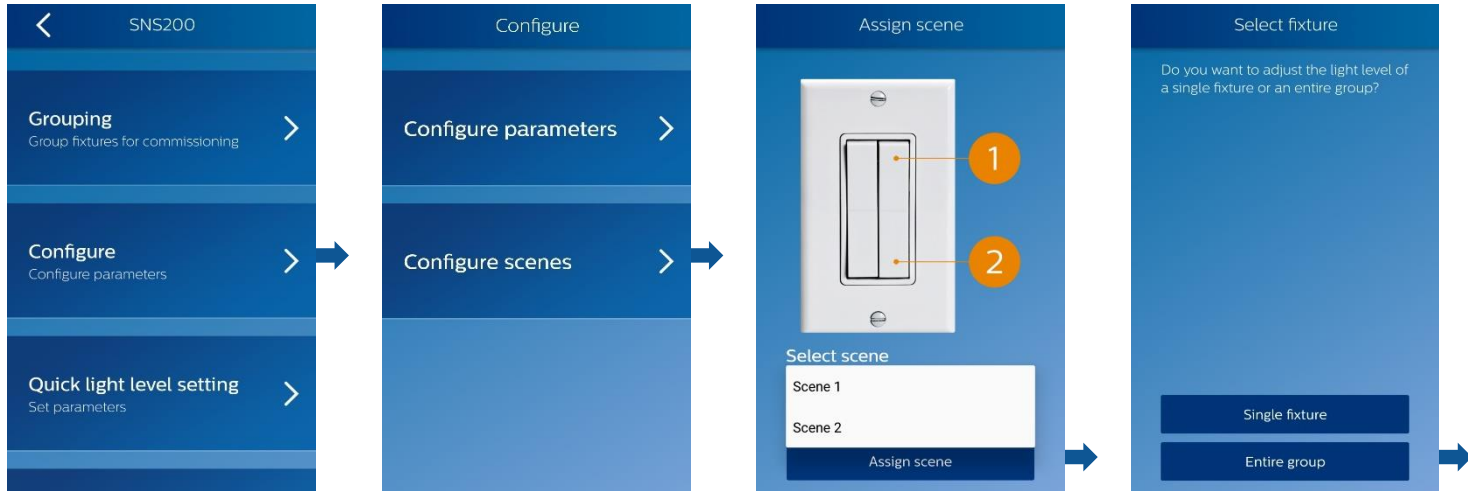
For example, let us suppose we want to assign the following scenes:

- **Scene 1** : the light level of the group associated to the switch will be 30%, with one particular fixture at 100%
- **Scene 2**: remains at default unless configured.

*Note: To store a **second scene**, repeat steps 1 to 8 and choose "Scene 2" at step 2.*

Configure

Configure scenes



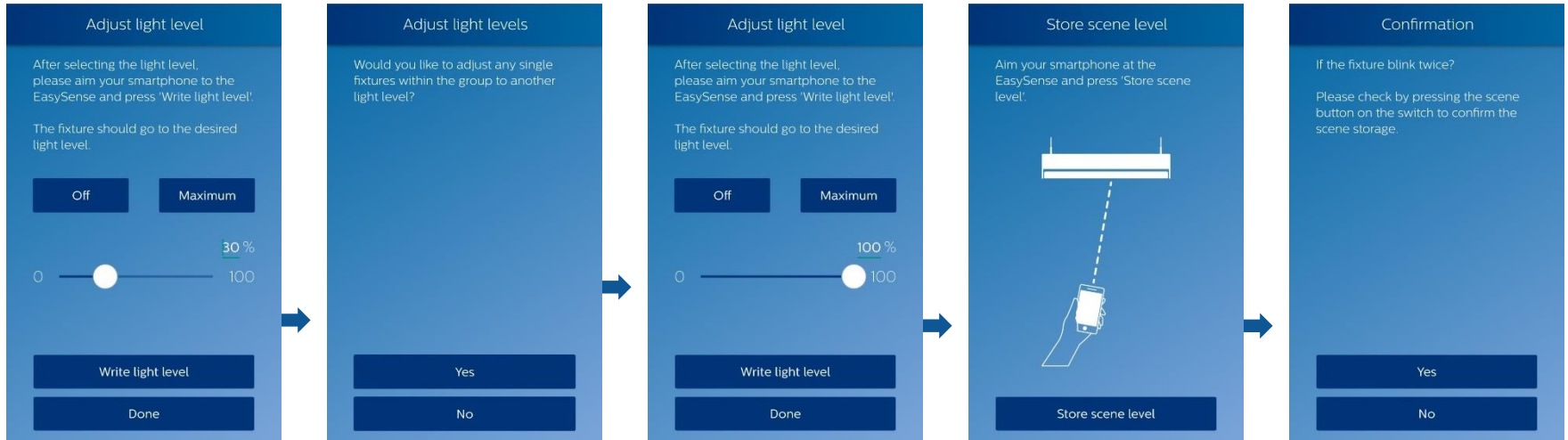
1. Open the *Configure scenes* submenu.

2. Select which scene to configure from pull down menu (select Scene 1) and press **Assign scene**.

3. Choose whether to set the light level of a single fixture or the entire group. In our case, press **Entire group**.

Configure

Configure scenes



4. Set the desired light level to 30%. Once ready, aim the smartphone at the sensor of a fixture of the group and press **Write light level**. Check that the fixtures went to the desired light level, then press **Done**.

5. Decide whether to adjust any single fixture of the group to another light level. In our case, press **Yes**.

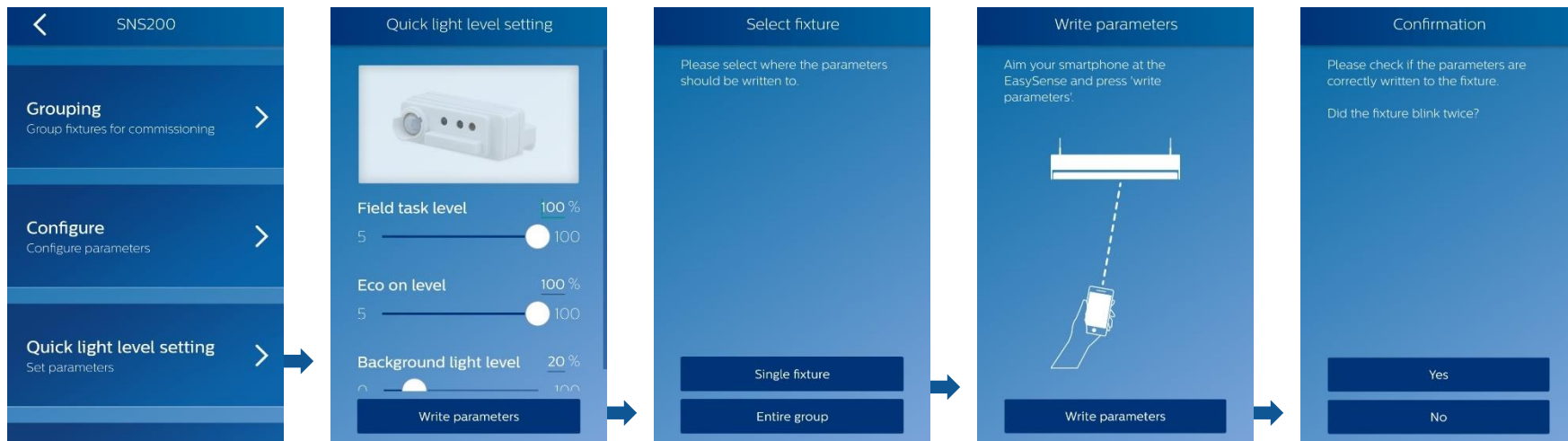
6. Repeat step 4 with a light level of 100%.

7. Aim the smartphone at the particular fixture, and press **Store scene level**.

8. Check if the fixtures of the group blinked twice, and that the scene is properly stored on the switch.

Quick light level settings

The Quick light level settings menu allows you to quickly setup the field task level, Eco on level and background light level of a single fixture or an entire group.



1. Open the *Quick light level setting* submenu.

2. Configure parameters to desired settings. Once ready, press **Write parameters**.

3. Choose whether to write the parameters to a single fixture or the entire group. In our case, press **Entire group**.

4. Aim the smartphone at the sensor of a fixture of the group and press **Write light level**.

5. Confirm that the fixture blinked twice. Press **Yes** to finish.

Profiles

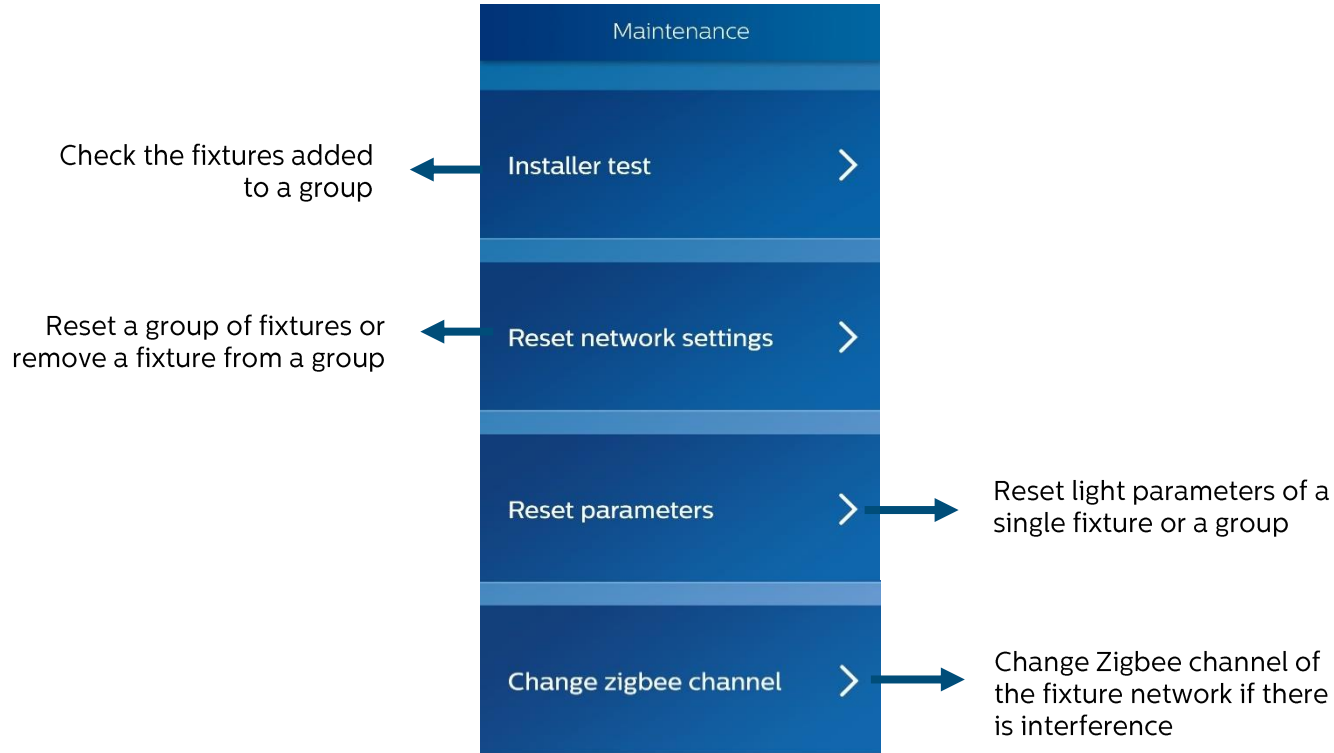
Use/edit stored profiles

Please refer to “Profiles” section in EasySense NFC app.

The user can choose to write a stored profile to either a single fixture or an entire group.

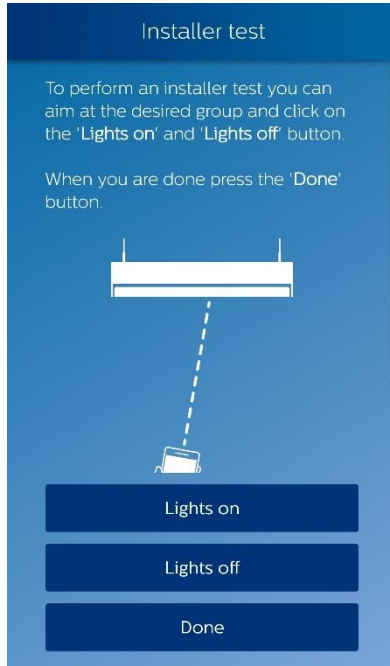
Maintenance

Features overview



Maintenance

Installer test



The installer test helps the user to identify the created groups.

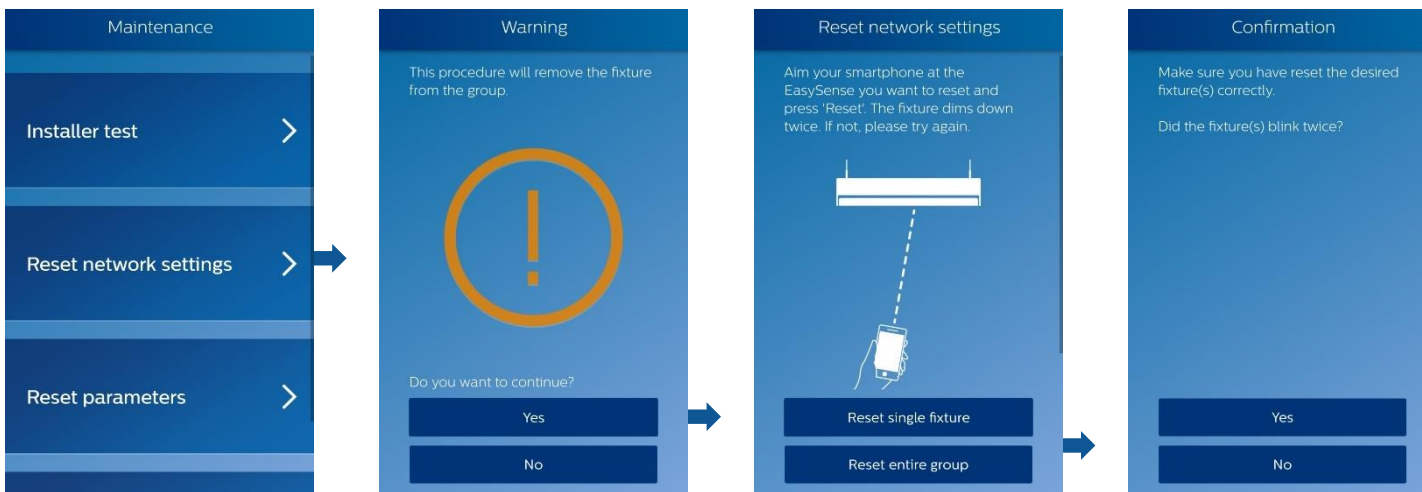
Aim at a sensor of a fixture with the smartphone. By pressing **Lights on** (or **Lights off**), all the fixtures belonging to the same group will go to full brightness (or shut down).

Once ready, press **Done** to go back to menu.

Maintenance

Reset network settings

It is possible to reset a single fixture (it will remove it from the group) or an entire group. Make sure that the fixtures remaining in the group blinked twice after the procedure.



1. Open the *Reset network settings* submenu.

2. Press **Yes** to continue to reset a fixture.

3. Choose whether to reset the network settings for a single fixture or the entire group.

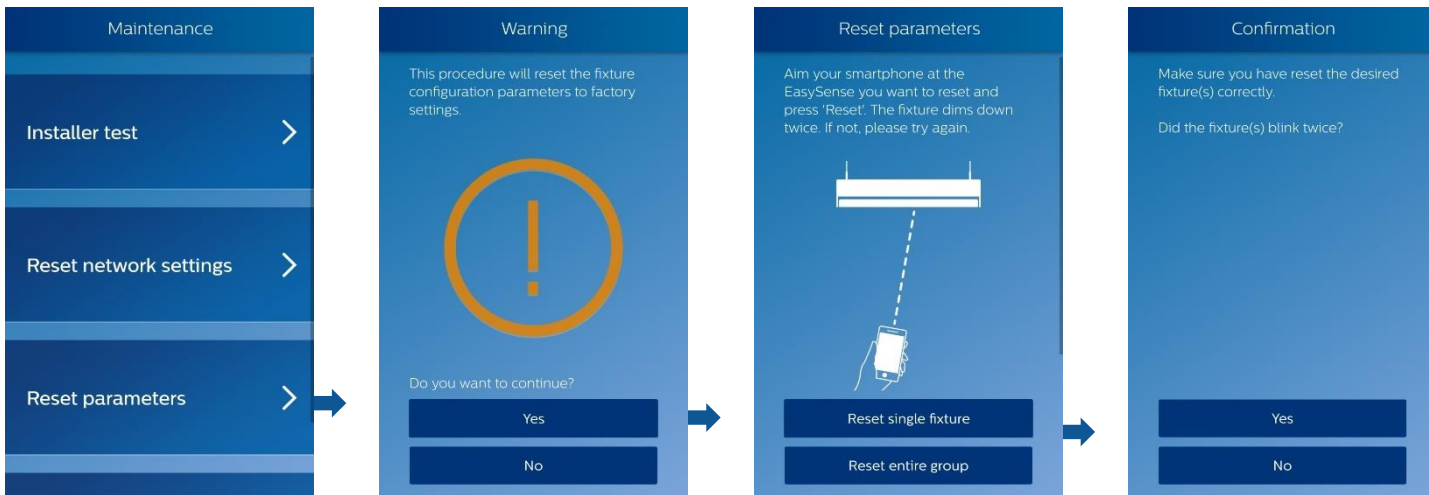
4. Confirm that the fixture(s) blinked twice. Press **Yes** to finish.



Maintenance

Reset parameters

With this option, the EasySense sensor is set back to the default state. The network of fixtures will remain unchanged.



1. Open the *Reset parameters* submenu.

2. Press **Yes** to continue to reset the fixture parameters.

3. Choose whether to reset the parameters for a single fixture or the entire group.

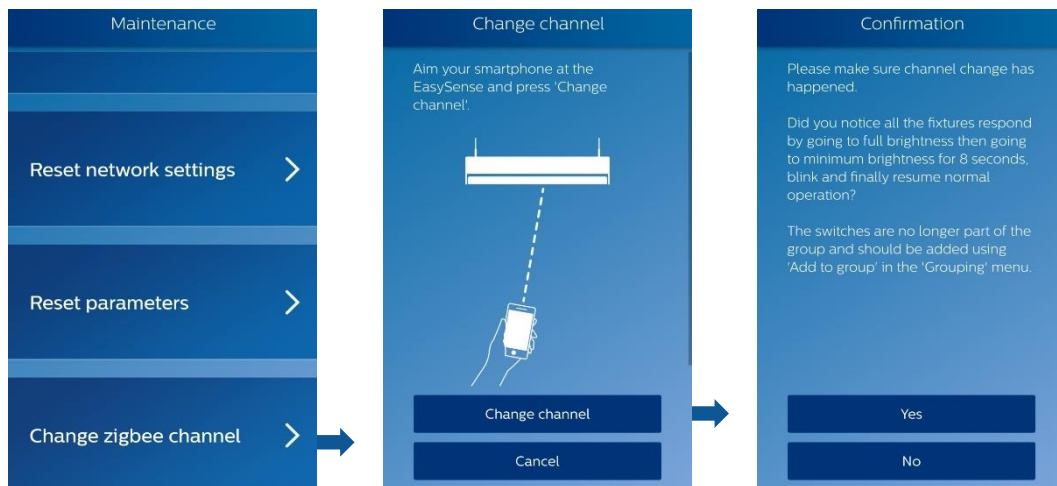
4. Confirm that the fixture(s) blinked twice. Press **Yes** to finish.



Maintenance

Change zigbee channel

It is possible to change the Zigbee channel of the fixture/group. This could help in case there is interference.



Careful: the wireless switches will no longer be part of the group after changing the channel. They should be added again.

1. Open the *Change zigbee channel* submenu.

2. Press **Change channel** to change to a different channel.

3. Confirm that the fixture responded. Press **Yes** to finish.

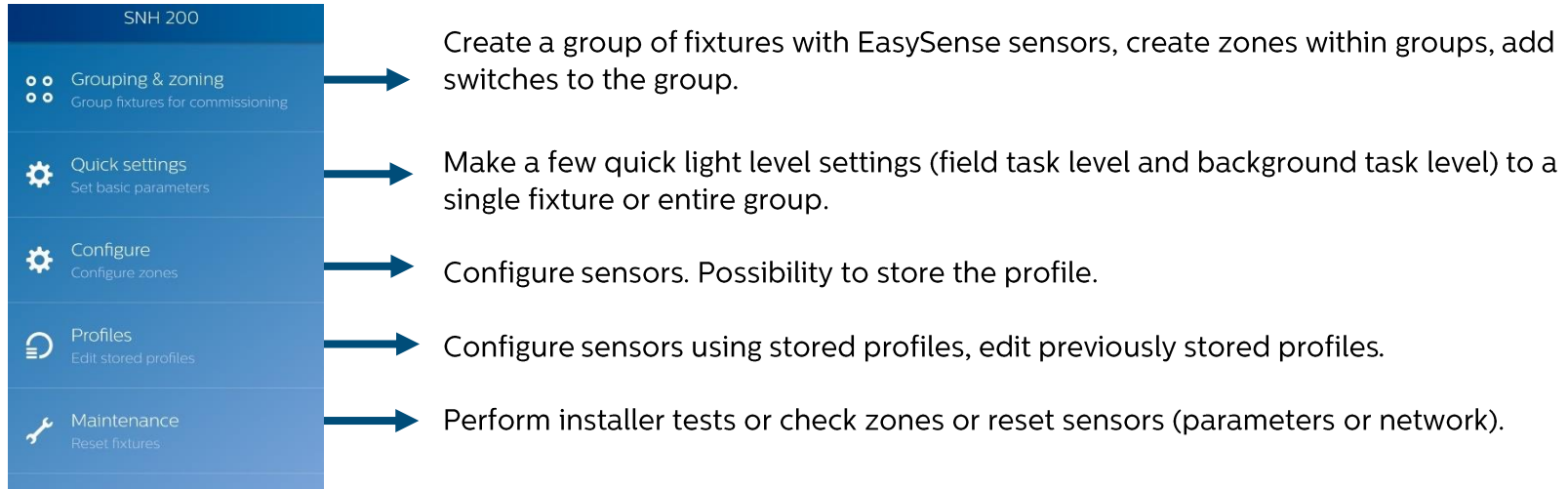
EasySense Industry IR

For EasySense SNH200



Features overview

This app can be used after the fixtures are installed and powered up. Both commissioning into groups/zones and configuration of parameters are possible via this app. It is mandatory to equip your phone with an IR dongle (available via Philips only).

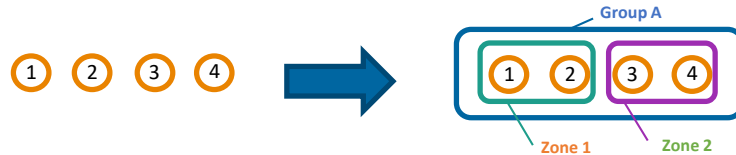


Grouping and zoning

Create group with zones

We will use an example to explain how to group and zone fixtures. Grouping along with zoning is a feature of the EasySense Industry IR app, so make sure you have a Philips IR dongle connected to your phone before proceeding.

Let us suppose you have 4 fixtures with a sensor per fixture, and want to group/zone them as shown below:



Grouping and zoning

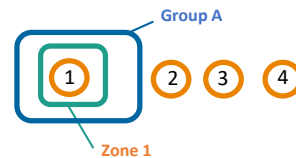
Create group with zones



1. Open the submenu
Create group with zones

2. Aim smartphone at
sensor 1 and press **Assign
zone**.

3. Confirm that the fixture
(1) dimmed down,
implying that it is added
to zone1 within Group A.
Press **Yes**.

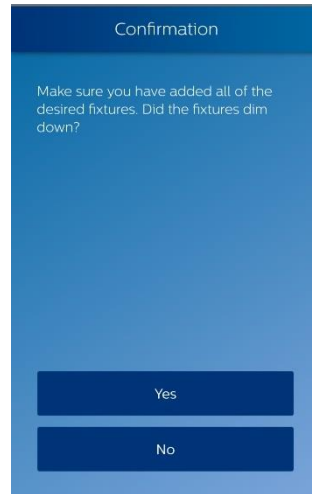


Grouping and zoning

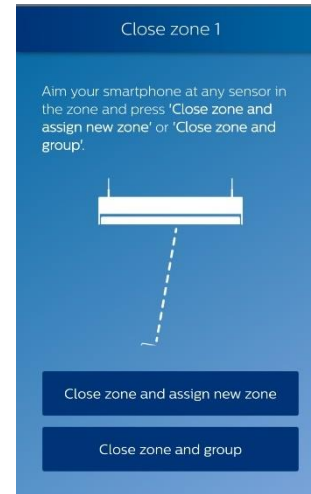
Create group with zones



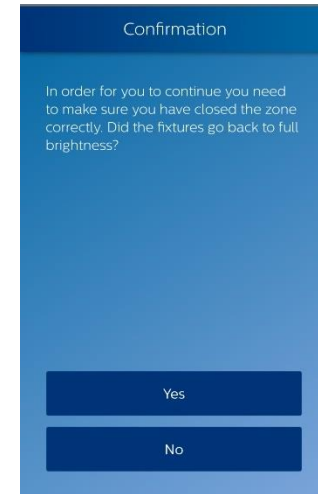
4. Aim smartphone at sensor 2 and press **Add fixture**. The fixture will dim down implying it is added to zone 1. Then press **Done**.



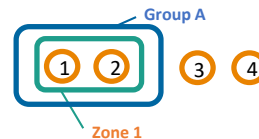
5. Confirm that the fixtures in the zone (fixtures 1+2) have dimmed down. Press **Yes**.



6. Aim at the sensor of fixture 1 or 2 (of Zone 1) and press **Close zone and assign new zone**.

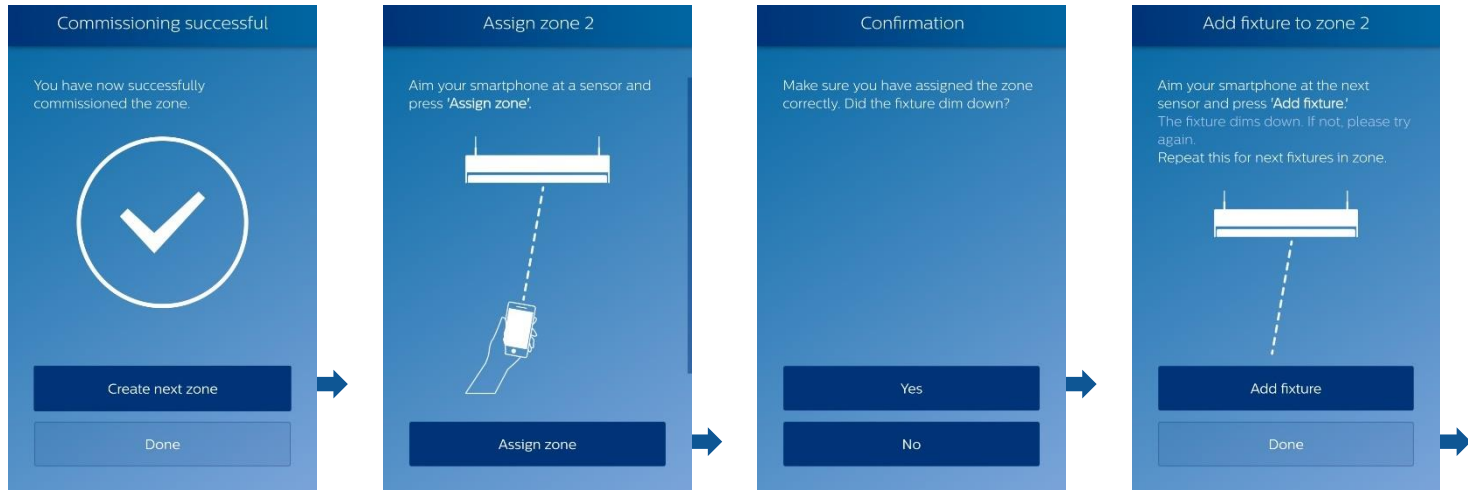


7. Confirm that the fixtures of Zone 1 (1+2) did go back to full brightness. Press **Yes**.



Grouping and zoning

Create group with zones



8. Zone 1 created successfully. Press **Create next zone**.

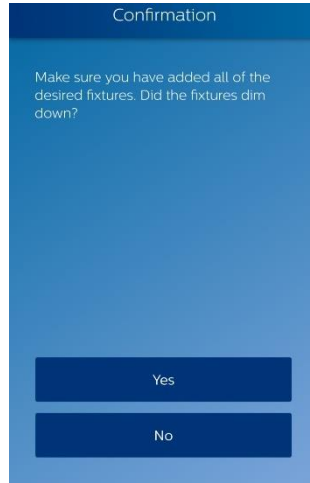
9. Aim smartphone at sensor 3 and press **Assign zone**.

10. Confirm that the fixture (3) dimmed down, implying that it is added to zone 2 within Group A. Press **Yes**.

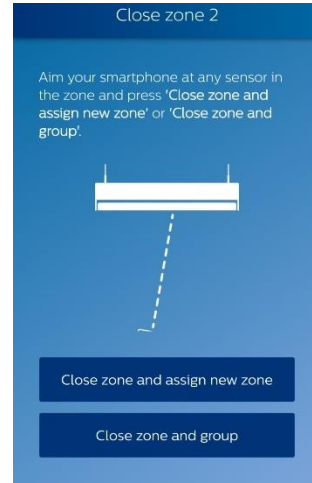
11. Aim smartphone at sensor 4 and press **Add fixture**. The fixture will dim down implying it is added to zone 2. Then press **Done**.

Grouping and zoning

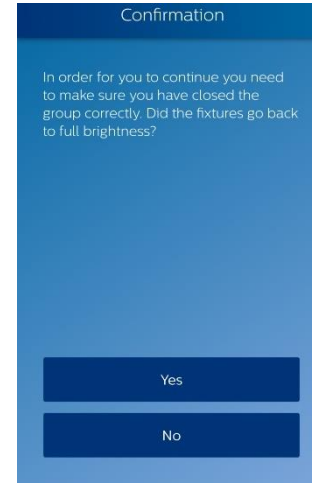
Create group with zones



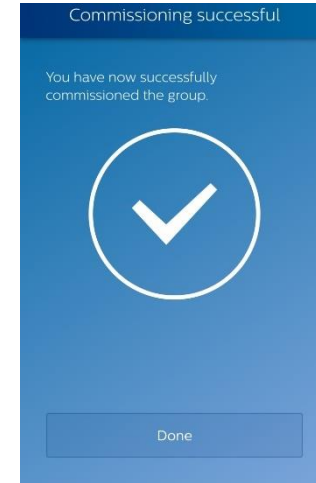
12. Confirm that the fixtures in the zone (fixtures 3+4) have dimmed down. Press **Yes**.



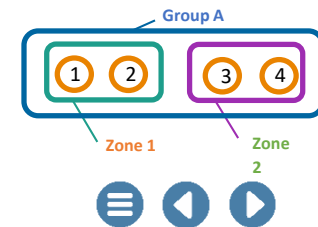
13. Aim at the sensor of fixture 3 or 4 (of Zone 2) and press **Close zone and group**.



14. Confirm that the fixtures of Zone 2 (3+4) did go back to full brightness. Press **Yes**.



15. Zone 1 + 2 in group A created successfully. Press **Done**.



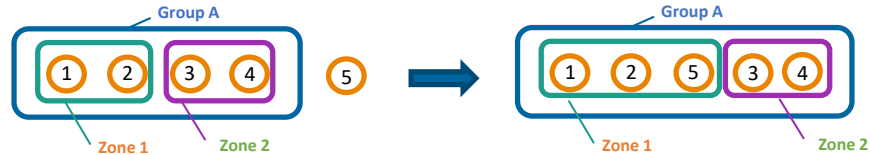
Grouping and zoning

Add fixture to zone (existing zone)

To add a fixture to a zone, there are two possibilities: Adding the fixture to an existing zone of the group, or to a free one (i.e. creating a new zone in the group).

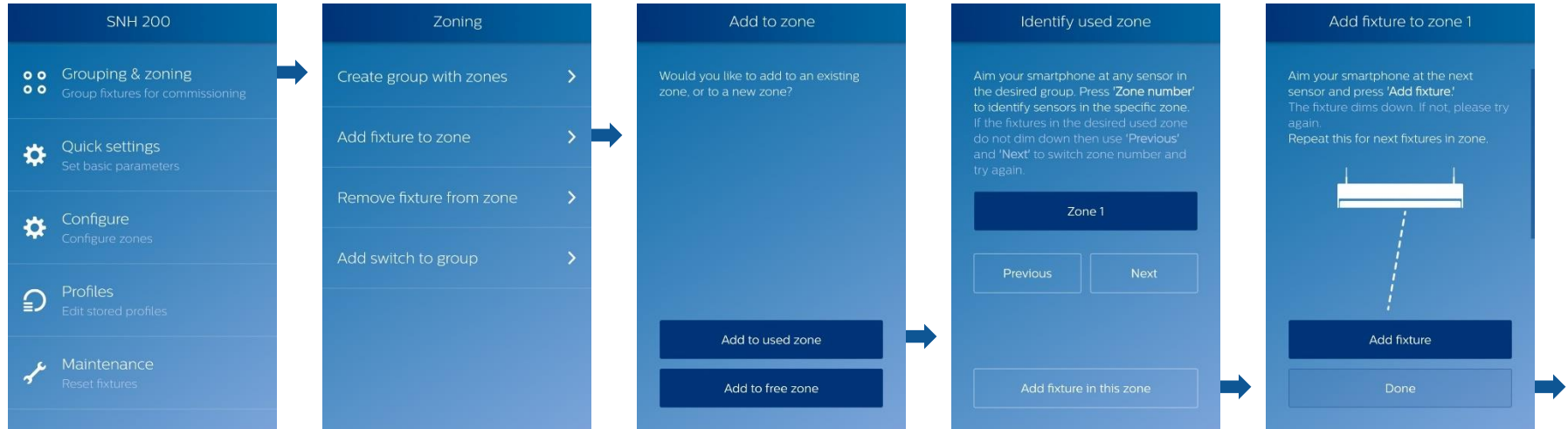
- Add fixture to existing zone

Let us suppose we want to add a fifth fixture to the group A, in zone 1:



Grouping and zoning

Add fixture to zone (existing zone)



1. Open the submenu **Add fixture to zone**.

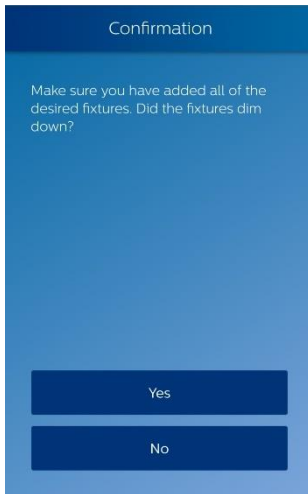
2. Press **Add to used zone**.

3. Aim the smartphone to the zone the fixture will be added to. In our case, click on **Zone 1**. Confirm that the fixtures from this zone (fixtures 1+2) dim down. Press **Add fixture in this zone**.

4. Aim the smartphone at fixture 5, and press **Add fixture**. If needed, repeat with other fixtures you want to add to Zone 1. Then, press **Done**.

Grouping and zoning

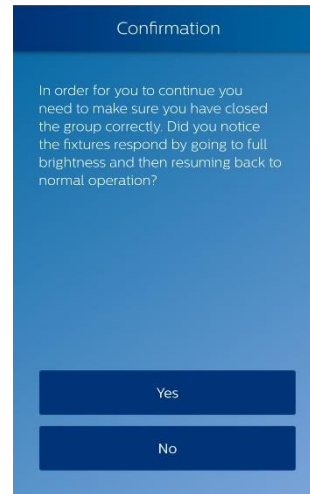
Add fixture to zone (existing zone)



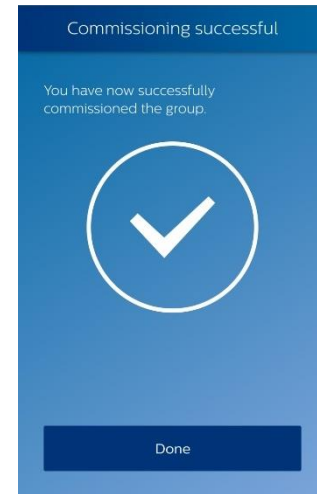
5. Confirm that the fixtures of Zone 1 (fixtures 1+2+5) dimmed down. Press **Yes**.



6. Aim at the sensor of a fixture in the group, and press **Close**.



7. Confirm that the fixtures of the group went to full brightness before resuming to normal operation. Press **Yes**.

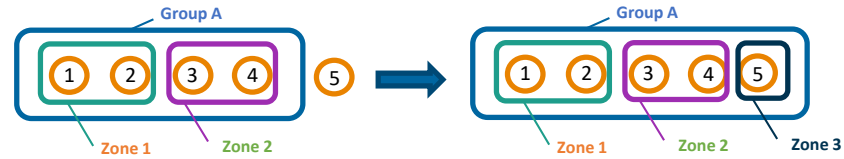


8. Fixture 5 successfully added to existing zone. Press **Done**.

Grouping and zoning

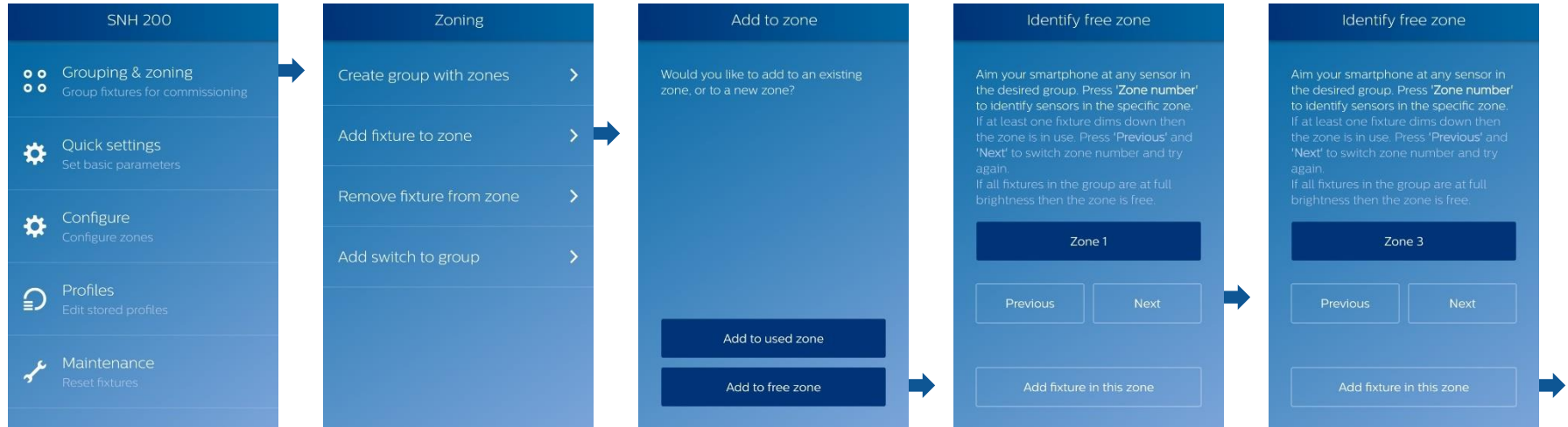
Add fixture to zone (free zone)

Now, let us suppose that the fifth fixture is to be added to group A in a new zone: Zone 3.



Grouping and zoning

Add fixture to zone (free zone)



1. Open the submenu *Add fixture to zone*.

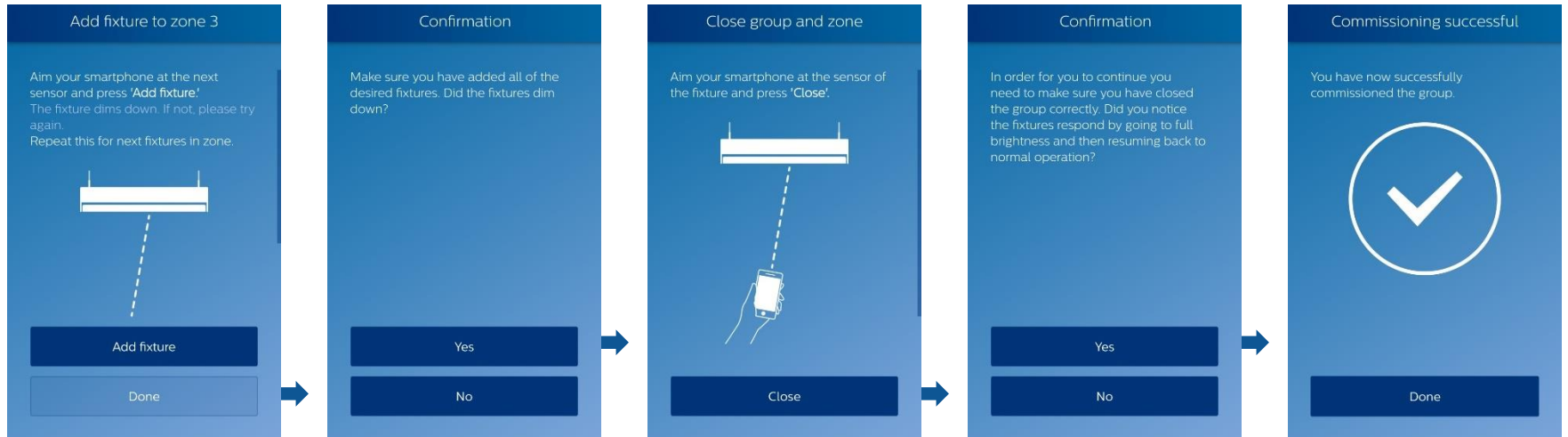
2. Press **Add to free zone**

3. Select the zone the fixture will be added to. In our case, the zones 1 and 2 are used already. Press **Next** to switch to *Zone 3*.

4. Press **Zone 3** to check that none of the fixtures dim down (meaning that zone 3 is indeed free). Press **Add fixture in this zone**.

Grouping and zoning

Add fixture to zone (free zone)



5. Aim the smartphone at fixture 5, and press **Add fixture**.
If needed, repeat with other fixtures you want to add to the new Zone 3. Then, press **Done**.

6. Confirm that the fixtures of Zone 3 (fixture 5) dimmed down. Press **Yes**.

7. Aim at the sensor of a fixture in the group, and press **Close**.

8. Confirm that the fixtures of the group went to full brightness before resuming to normal operation. Press **Yes**.

9. Fixture 5 successfully added to new zone 3. Press **Done**.

Grouping and zoning

Remove fixture from zone

This procedure will remove the fixture not only from its zone, but also from the group, as a fixture cannot exist in a group without belonging to a zone.

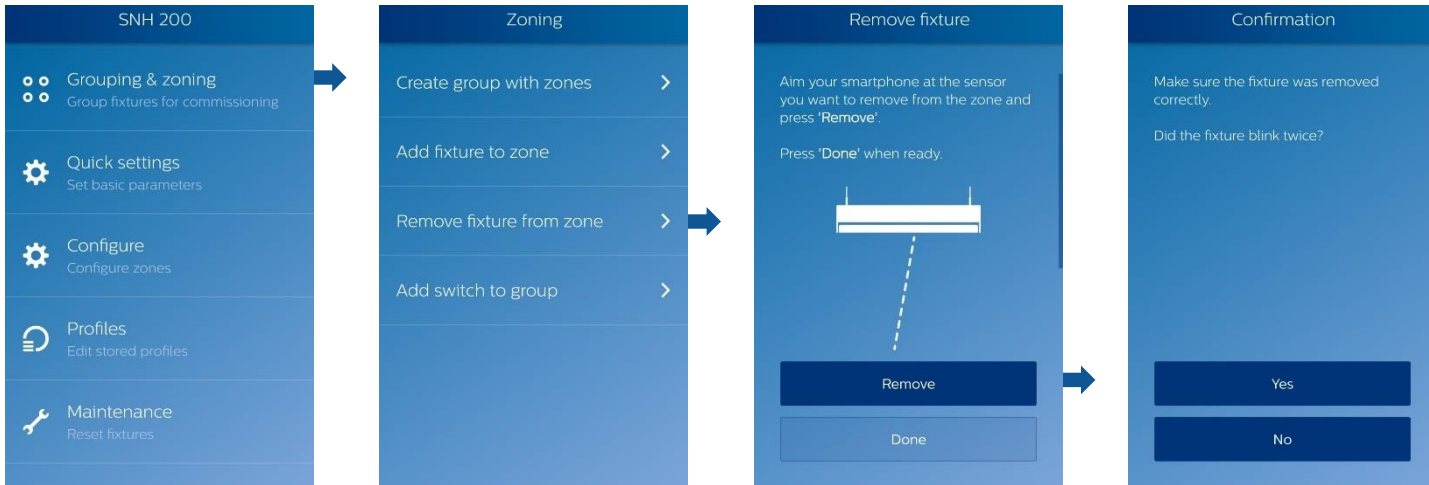
Let us suppose we want to remove the fixture 3 from its zone:



Note: to change a fixture's zone, the user will first have to remove it from a group, then add it to the desired zone – please refer “Add fixture to zone (existing zone or free zone)” in EasySense Industry IR app.

Grouping and zoning

Remove fixture from zone



1. Open the submenu
Remove fixture from zone.

2. Aim the smartphone at
the sensor of fixture 3 and
press **Remove**. When
finished press **Done**.

3. Confirm that the fixture
that received the removal
command blinked twice.
Ensure that it is indeed
the intended fixture. Press
Yes.

Grouping and zoning

Add switch to group

Each brand of switch has a different way of being added to a group. For information on compatible switches refer to the EasySense datasheets at www.philips.com/easysense.

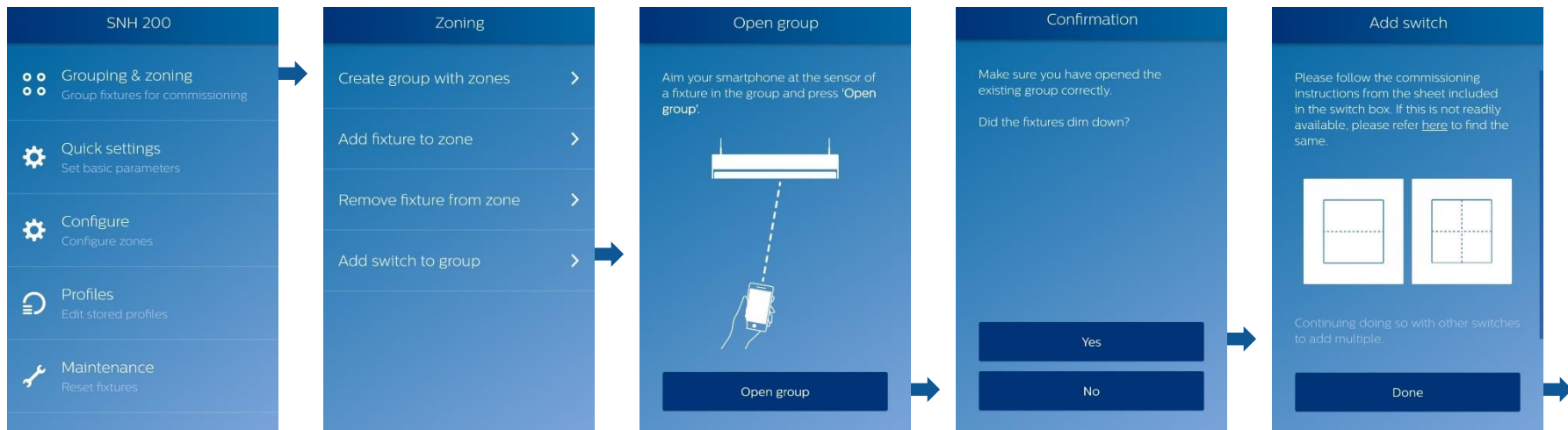
The wireless switches that can be grouped to our fixtures are from the following brands:

- **Illumra**
- **Magnum Energy Solutions**

Note: there is no procedure to remove a switch from a group – the user will need to reset the network via *Maintenance* menu (please refer to “Reset Network Settings” in EasySense Office IR app).

Grouping and zoning

Add switch to group



1. Open the submenu *Add switch to group*.

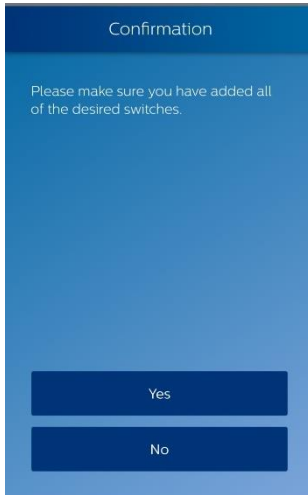
2. Aim the smartphone at any fixture of the group you want to add the switch to and press **Open group**.

3. Confirm that the fixtures of the group dimmed down. Press **Yes**.

4. Follow the commissioning instructions for the switch you want to link. If you want to commission several identical switches, repeat this step. Once ready, press **Done**.

Grouping and zoning

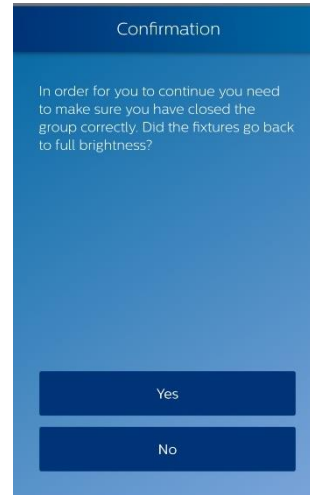
Add switch to group



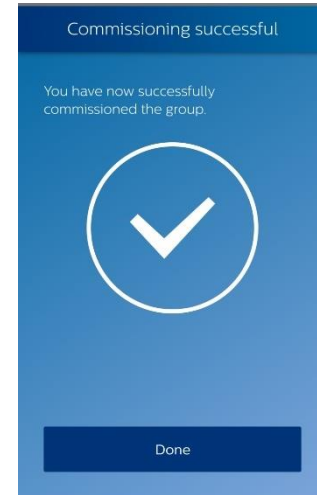
5. Confirm you added all switches. Press **Yes**.



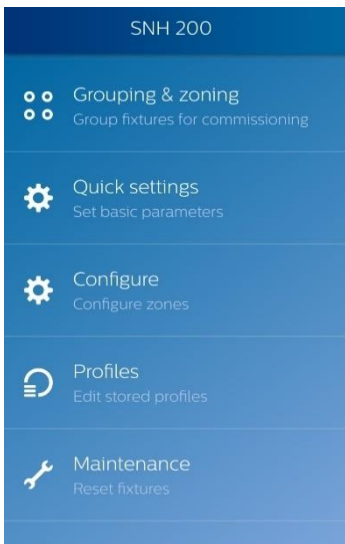
6. Aim the smartphone at any fixture of the group and press **Close**.



7. Confirm that all fixtures of the group went back to full brightness. Press **Yes**.



8. Wireless switch(es) successfully added to the group. Press **Done** to finish.



Quick settings

Please refer to “Quick light level settings” of **EasySense Office IR** section. However, from this app, the user can choose to write a stored profile to either a single fixture or an entire group.

Configure

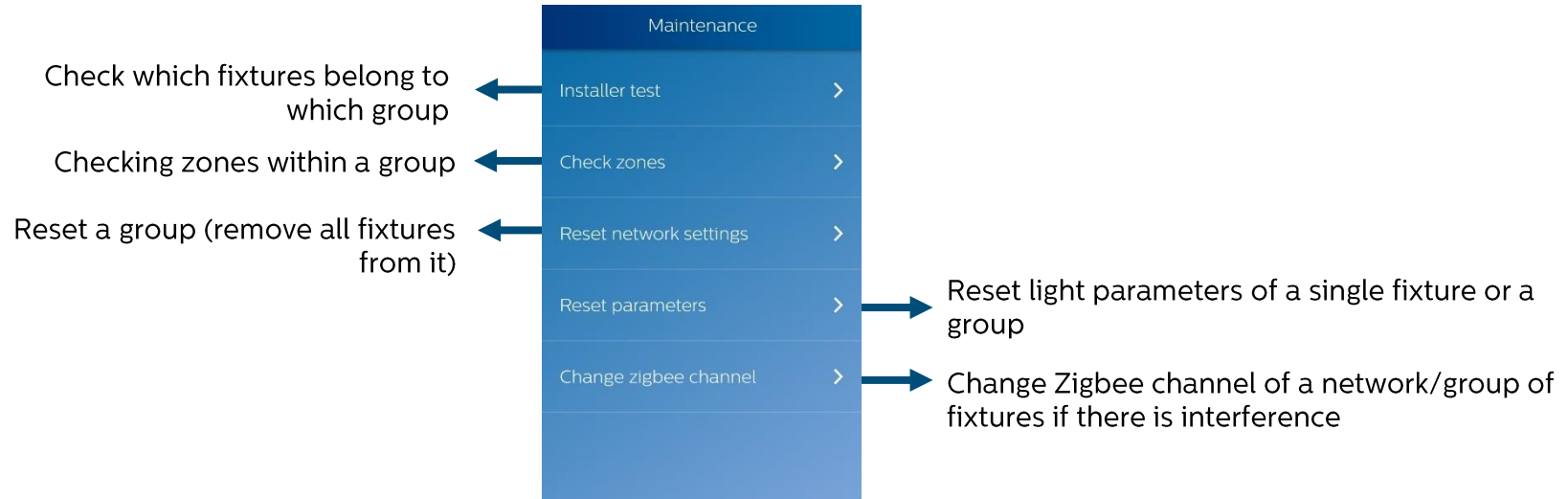
Please refer to “Configure” of **EasySense Office IR** section. However, from this app, the user can choose to write a stored profile to either a single fixture or an entire group.

Profiles

Please refer to “Profile” section in **EasySense NFC app**. However, from this app, the user can choose to write a stored profile to either a single fixture or an entire group.

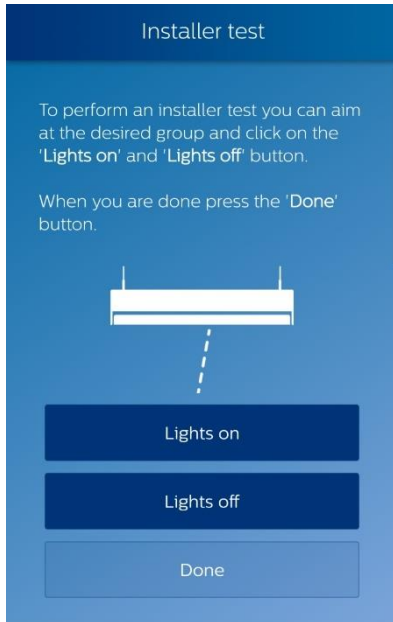
Maintenance

Features overview



Maintenance

Installer test



The installer test helps the user to identify the created groups.

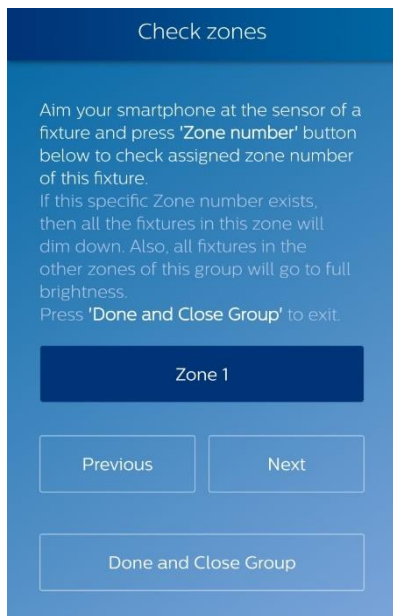
Aim at a sensor of a fixture with the smartphone. By pressing **Lights on** (or **Lights off**), all the fixtures belonging to the same group will go to full brightness (or shut down).

Once ready, press **Done** to go back to menu.

Maintenance

Check zones

The “Check zones” allows the user to check if the fixtures pointed at belong to the selected zone within a group and are created as desired by the application.



First, aim at any fixture's sensor of the group you want to check zones.

By pressing **Zone 1** (as shown), all the fixtures belonging to this zone will dim down – given that this zone exists. The other fixtures, in other zones, will go to full brightness.

Press **previous** or **next** to change zones.

Once you finished checking the zones of a group, press **Done and Close Group**.

Maintenance

Maintenance	
Installer test	>
Check zones	>
Reset network settings	>
Reset parameters	>
Change zigbee channel	>

Reset network settings

Please refer to “Reset Network settings” of **EasySense Office IR** section.

Reset parameters

Please refer to “Reset parameters” of **EasySense Office IR** section.

Change zigbee channel

Please refer to “Change Zigbee channel” of **EasySense Office IR** section.

Using IR Dongle



For EasySense Office IR

For using the EasySense Office IR app for EasySense SNS200, it is recommended to use an IR Dongle (available via Philips)

- If any device is connected to audio jack interface of the phone then, irrespective of whether or not phone has internal IR blaster, the APP assumes connected device to be IR Dongle and uses it to fire IR commands.
- If no device is connected to audio jack interface of the phone and the phone has an internal IR blaster then APP uses the internal IR blaster to fire IR commands.
- If no device is connected to audio jack interface of the phone and the phone does not have an internal IR blaster then APP provides warning message that IR dongle is required for proper functioning.

For EasySense Industry IR

For using the EasySense Industry IR app for EasySense SNH200, it is mandatory to use an IR Dongle (available via Philips)

- If any device is connected to audio jack interface of the phone then APP assumes it to be IR Dongle and uses it to fire IR commands.
- If no device is connected to audio jack interface of the phone then APP provides warning message that IR dongle is required for proper functioning.

*For longer battery life, please put back the battery insulation strip in the dongle



App settings

App Settings

Preferences



Configuration

- **Upload configuration (on/off) – default on**

When enabled, it collects the configuration data of NFC or IR in the cloud after programming the sensor or driver. This will be useful to generate data analytics in future. If the user doesn't want to upload their data in cloud, the feature must be disabled.

IR

- **Assist pointing (default enabled)**

Activate or deactivate notifications if the phone is not pointed correctly while sending IR commands.

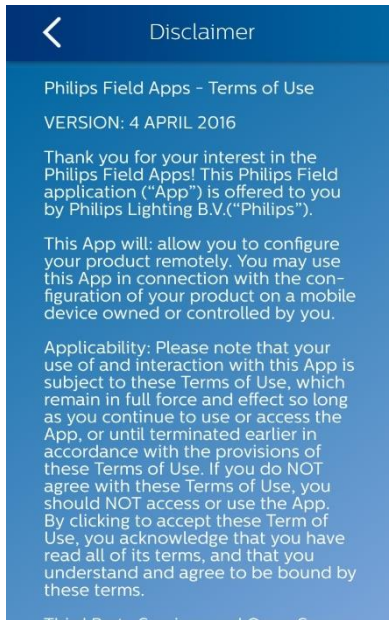
- **Invert signals (- default disabled)**

Some Android phones need to have this option enabled for correcting the IR operation.

App Settings

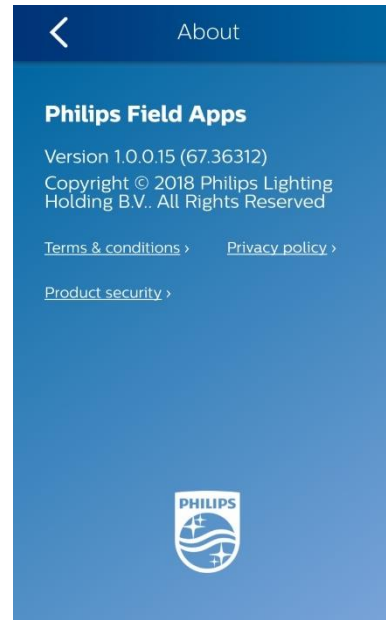
Preferences

Disclaimer



The user can read the Terms of Use of Philips Field Apps from this menu.

About



From this menu, the user can get information about the app (App version, Copyright), read about terms & conditions, the privacy policy or product security.

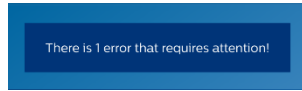
Troubleshooting tips/System messages

Troubleshooting tips/System messages

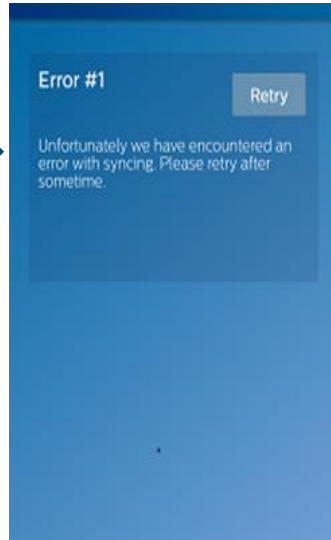
- Every time you program an EasySense, the app will try to upload the related data to the Philips Lighting database. If you are working offline, you will see regular reminders that you should connect to Wi-Fi as soon as it's convenient.
- As soon as you connect to Wi-Fi, after working offline, the app will upload the data for any units that you have programmed. If you see the messages, below, click RETRY to initiate the upload.
- You will see this message when it's been between 1 and 5 days since your phone has been refreshed with the latest data from the Philips Lighting database.

Note: You can ALWAYS click past these warning messages and continue to work with Philips Field apps. To keep your data current, you should connect to Wi-Fi on a regular basis.

Troubleshooting tips/System messages



Error message if there is no internet access or data connection on the smartphone.

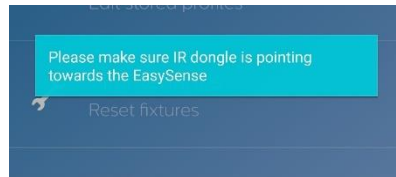


Clicking on the error message generates a reminder to connect to WiFi.



If you see this message, first try connecting to WiFi to refresh the database on your phone.
Scan the sensor again.
If you still see the message after the refresh, the sensor firmware in question is not supported by the app.

Troubleshooting tips/System messages



To disable this warning message, go to the apps settings (please refer to “Settings” section)



It is mandatory to use an IR dongle for EasySense Industry IR

